

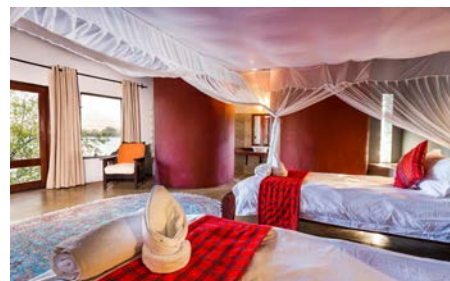
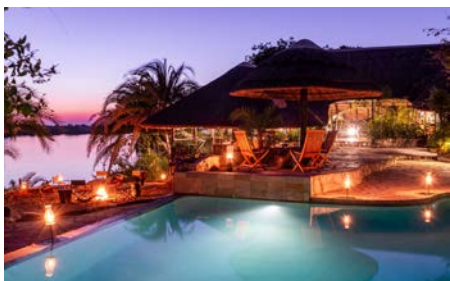


RACK Rates 2021

UNIQUE BY NATURE
MUKAMBBI
SAFARIS

Mukambi Safaris operate 3 properties within Kafue National Park: Mukambi Safari Lodge, Fig Tree Bush Camp and Busanga Plains Camp. Mukambi Lodge is the closest to Lusaka and also where we welcome our guests before they head off to our bush camps.

Mukambi Safari Lodge



Mukambi Safari Lodge

Mukambi Safari Lodge is located in Kafue National Park, Central Province, in an area that is known for its subtropical summer and temperate winter climate as well as its diverse landscapes and ecosystems.

The Lodge has three main room types; Luxury Villa, Standard Chalets and Luxury Safari Tents. The lodge also has units for accompanying guides/drivers (enquire direct for price).

Luxury Family Villa (sleeps 4). This unit is ideal for families wanting a bit more space. It has 2 rooms, one double & one twin, it also has a private lounge area and a deck overlooking the Kafue River.

Standard Chalets, 8 Thatched chalets each faces the Kafue River (4 doubles and 4 twins). There is also a smaller family chalet, which sleeps 4.

Luxury Safari Tent, 4 Luxury tents (all doubles, but can be re-configured to twin rooms upon request).

FULL BOARD RATES – Includes 3 meals a day and accommodation only.

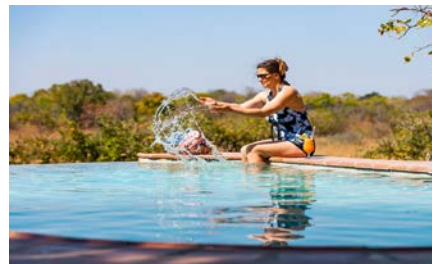
ALL INCLUSIVE – Includes 3 meals a day, local beverages & pouring brands, 2 activities a day and accommodation.

2021

14 units: 8 Chalets, 4 Luxury Tents, 1 Family Chalet, Riverside Villa	Low Season 1 Jan - 30 June & 1 Nov - 31 Dec	Peak Season 1 July - 31 Oct
	RACK	RACK
RATES IN US\$ Per person sharing/per night		
Full Board - Chalet Single Supp	250 N/A	325 98
FB - Luxury Safari Tent Single sup	290 N/A	360 108
FB - Riverside Villa (min 3pax)	310	385
All Inclusive - Chalet Single Supp	370 N/A	455 137
AI - Luxury Safari Tent Single sup	410 N/A	495 149
AI - Riverside Villa (min 3pax)	430	515

Rates exclude National Park Fees, US \$20 per person per day

Fig Tree Bush Camp



2021

4 Luxury Tents	Low Season 1 May - 30 June & 1 - 30 Nov	Peak Season 1 July - 31 Oct
Rates in US\$ Per person sharing/per night	RACK	RACK
Fully Inclusive	440	535
Single supp	N/A	161

*Excludes National Park Fees \$20 per person per day
And Bed Night Levy \$30 per person per night*

Fig Tree Bush Camp

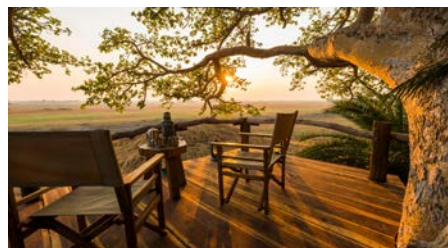
The camp is named after the giant Fig Tree next to the boma (central area) overlooking a unique sandy lagoon.

The beautiful location in combination with spectacular accommodation and the variety of wildlife are the main attractions – not to mention the remoteness of the Camp and as always the good food.

Luxury Safari Tent, 4 Luxury tents (all doubles). Fig Tree Bush Camp has tented accommodation on 3-meter high platforms above the ground, giving a spectacular view over the lagoon and the surrounding bush. We have 4 en-suite luxury safari tents on stilts (2 twin and 2 double).

Busanga Plains Camp

Busanga Plains Camp



2021

4 Luxury Tents	Low Season 1 May - 30 June & 1 - 30 Nov	Peak Season 1 July - 31 Oct
Rates in US\$ Per person sharing/per night	RACK	RACK
Fully Inclusive	Camp closed	825
Single supp		248

*Excludes National Park Fees \$20 per person per day
And Bed Night Levy \$30 per person per night*

The Plains Camp is the seasonal luxury bush camp of Mukambi Safaris located deep in the heart of the famous Busanga Plains in the north of beautiful Kafue National Park.

The raised boma (communal area), with open campfire and dining area, is rustic, informal and overlooks the openness of the plains. Camp has **4 luxury safari tents** (2 twins and 2 double). With en-suite open air bathrooms with flushing toilets and bucket showers, each one overlooking the Busanga Plains.

The tents are light, airy and spacious with large beds draped with mosquito nets.

Booking Information

Road Transfer Rates

Return Lusaka to Mukambi (4,5 hours) per person	USD 200
Single supplement	USD 60
One way to or from Lusaka per person	USD 125
Single supplement	USD 38
Return Lusaka – Mukambi/vice versa per vehicle	USD 600
One way Lusaka – Mukambi/vice versa per vehicle	USD 450

Inter Camp Transfers

Mukambi/FT to/from Busanga road transfer one way 6 hrs, p.p.	USD 75
Single supplement	USD 23
Mukambi to/from FT road transfer one way p.p. 1,5 hrs	USD 25
Single supplement	USD 6

Air charter flights

Your air charter company will have details about flights to Mukambi. However Mukambi Safaris is also able to arrange chartered flights for its guests once they've enquired with reservations. Sadly there are no seat rates available and all flights are quoted on charter basis. We use Chunga airstrip for guests staying at Fig Tree Bush Camp and guests staying at Busanga Plains Camp use Busanga airstrip.

Mukambi flights are mainly serviced by Flying Mission Zambia, but we are able to use other charters based on the requirements of the group. Duration of flights will differ depending on the plane used.



- Master card/Visa/Amex are all welcome. A 3% handling fee is payable on all transactions. Alternatively guests can make payments in cash US\$ or Zambian Kwacha.
- All rates are quoted in USD per person per night sharing.
- A single supplement of 30% applies during the peak season.
- **Full Board** rates include all meals and accommodation only. The rates exclude drinks, activities and National Park fees and Bed Night Levies.
- **Fully inclusive** rates all meals, accommodation, 2 activities a day and drinks. The rates exclude National Park fees and Bed Night Levies.

Children's Policy:

Mukambi Safari Lodge:

Children between 4 and 12 years pay 50% provided they share with parents/adults. Children 4 years and younger stay for free.

Children of all ages are welcome to join their parents on activities and will be held fully responsible for their safety.

Guests with children will be either grouped together or given a separate vehicle.
Fig Tree Bush Camp & Busanga Plains Camp:

Only children 12 years and older are allowed to stay at Fig Tree and Busanga, however exceptions can be made but must first be discussed with management.

National Park Entry fees:

- National Park entry fees are excluded from our rates.
- Guests are required to pay Park Fees directly to DNPW (Department of National Parks and Wildlife) in cash only (USD or ZMW).
- Currently the rates are as follows:
Non-residents: USD 20 per person per day for park entry.
Children 12 and under: USD 10 per person.

Bed Night Levies:

- Busanga Plains Camp and Fig Tree Bush Camp are located within the National Park and in addition to park entry fees, guests have to pay bed night levies: USD 30 per person per night.
- Bed night levies are not included in the rack rate and are charged separately.
- Agents have the option to Pre-pay Park fees for guests or the guests can settle directly in camp (cash only) with the DNPW officer on duty.
- National Park entry fees & Bed Night Levies are subject to change.

Deposit Policy:

- There is 50% deposit on accommodation only bookings and a 25% deposit on safari package bookings in order to confirm and hold the space.
- Provisional bookings will generally be held for 14 days following which the deposit should be paid or the booking will be released.

Cancellation Policy:

- 91 days or more – no charge.
- 91 – 30 days before your safari – 25% cancellation fee.
- Within 30 days before your safari – 100% cancellation fee.

We have attractively priced packages if you wish to visit two or more of our camps.

+260 (0) 974424013 | info@mukambi.com | www.mukambi.com