



• GREEN SAFARIS •

RATES & INCENTIVES

International RACK 2021 and 2022 \$USD



GREEN SAFARIS - INTERNATIONAL RATES SUMMARY 2021 and 2022 \$USD

Valid 1 January 2021 to 31 Dec 2022. Camp closures in details below.

TONGABEZI

No closure

GREEN - 1 Jan to 30 April & 1 Oct to 31 Dec

HIGH - 1 May to 30 Sept

RACK

COTTAGES	RATE TYPE Per Person	Green	High
* Accommodation, meals, activities and non- premium drinks. * Children 7-18 pay 50% if sharing with 2 adults. No children under 7. * 40% Single Supplement Applies in Peak Season	Nightly - per person sharing Long Stay Discount-3 nights & more	\$ 740 \$ 660	\$ 875 \$ 830
HOUSES		Green	High
* Accommodation, meals, activities and non- premium drinks. * Children 7-18 pay 50% if sharing with 2 adults. No children under 7. * 40% Single Supplement Applies in Peak Season	Nightly - per person sharing Long Stay Discount-3 nights & more	\$ 930 \$ 840	\$ 1,050 \$ 950
NUT & DOG HOUSE		Green	High
* Accommodation, meals, activities and non- premium drinks. * Children 7-18 pay 50% if sharing with 2 adults. No children under 7. * 40% Single Supplement Applies in Peak Season	Nightly - per person sharing Long Stay Discount-3 nights & more	\$ 1,070 \$ 960	\$ 1,220 \$ 1,100
TANGALA HOUSE	Rate Type	Green	High
* Minimum 3 nights or more. * Accommodation, meals, activities and non- premium drinks. * Children 5-18 pay 50%. 0-4 Stay free. * Max 8/ Min 4 Adults OR 2 Adults & 3 Children	3 Night Minimum Stay	\$ 870	\$ 870

SINDABEZI

No Closure

GREEN - 1 Jan to 30 April & 1 Oct to 31 Dec

HIGH - 1 May to 30 Sept

RACK

CHALETS	RATE TYPE Per Person	Green	High
* Accommodation, meals, activities and non- premium drinks. * Children 15 and over only. Full adult rates apply. * 40% Single Supplement Applies in Peak Season	Nightly - per person sharing Long Stay Discount-3 nights & more	\$ 595 \$ 540	\$ 680 \$ 650
HONEYMOON CHALET		Green	High
* Accommodation, meals, activities and non- premium drinks. * Children 15 and over only. Full adult rates apply. * 40% Single Supplement Applies in Peak Season	Nightly - per person sharing Long Stay Discount-3 nights & more	\$ 650 \$ 590	\$ 770 \$ 730

ILA SAFARI LODGE

Closes 1 Feb to 4 March 2021 inclusive and 31 Jan to 3 Mar 2022 inclusive

GREEN - 1 Jan to 30 Jun & 1 Nov to 31 Dec

HIGH - 1 July to 31 October

RACK

GENERAL	RATE TYPE per person	Green	High
* Accommodation, meals, activities and non- premium drinks. * Children 5-18 pay 50% if sharing with 2 adults. 0-4 Stay free. * 40% Single Supplement Applies in Peak Season.	Nightly - per person sharing Long Stay Discount-3 nights & more	\$ 450 \$ 360	\$ 695 \$ 560

CHISA BUSANGA CAMP

Open 1 June to 15 November

GREEN - 1 Jun to 30 Jun & 1 Nov to 30 Nov

HIGH - 1 July to 31 October

RACK

GENERAL	RATE TYPE per person	Green	High
* Accommodation, meals, activities and non- premium drinks. * No children 14 and younger. Older children pay adult rate. * 40% Single Supplement Applies in Peak Season.	Nightly - per person sharing Long Stay Discount-3 nights & more	\$ 700 \$ 630	\$ 875 \$ 790

SHAWA LUANGWA CAMP

Open 1 May to 30 November

GREEN - 15 May to 30 June and 1 Nov to 30 Nov

HIGH - 1 July to 31 October

RACK

GENERAL	RATE TYPE per person	Green	High
* Accommodation, meals, activities and non- premium drinks. * Children 5-18 pay 50% if sharing with 2 adults. 0-4 Stay free. * 40% Single Supplement Applies in Peak Season	Nightly - per person sharing Long Stay Discount-3 nights & more	\$ 550 \$ 440	\$ 800 \$ 640

KAYA MAWA

Closes 4 Jan to 1 April 2021 and 3 Jan to 1 April 2022

GREEN - 1 April to 31 July & 1 Nov to 4 Jan

HIGH - 1 Aug to 31 Oct

RACK

STD ROOMS + STD FAMILY (4 Standard + 2 Family Units)	RATE TYPE Per Person	Green	High
* Accommodation, meals, non-premium drinks + non-motorised activities. * Children 5-18 pay 50% if sharing with 2 adults. 0-4 stay free. * 40% Single Supplement Applies in Peak Season.	Nightly - per person sharing Long Stay Discount-3 nights & more	\$ 325 \$ 260	\$ 495 \$ 446
PREMIUM ROOMS + POOL SUITES (3 Units)		Green	High
* Accommodation, meals, non-premium drinks + non-motorised activities. * Children 5-18 pay 50% if sharing with 2 adults. 0-4 stay free. * 40% Single Supplement Applies in Peak Season.	Nightly - per person sharing Long Stay Discount-3 nights & more	\$ 375 \$ 300	\$ 550 \$ 495
MADIMBA + MAINJA PRIVATE HOUSES (2 Units)		Green	High
* Accommodation, meals, non-premium drinks + non-motorised activities. * Children 5-18 pay 50% if sharing with 2 adults. 0-4 stay free. * 40% Single Supplement Applies in Peak Season.	Nightly - per person sharing Long Stay Discount-3 nights & more	\$ 425 \$ 340	\$ 600 \$ 540
NDOMO HOUSE		Green	High
* Accommodation, meals, non-premium drinks + non-motorised activities. * Children 5-18 pay 50% if sharing with 2 adults. 0-4 stay free. * Minimum 4 adults per booking. * 40% Single Supplement Applies in Peak Season.	Nightly - per person sharing Long Stay Discount-3 nights & more	\$ 425 \$ 340	\$ 600 \$ 540

STAY 4 PAY 3

- * Available until 31 December 2022
- * Applies to our minimum 3 night rate
- * Minimum 3 nights per property
- * No other incentives apply when booking this deal



TONGABEZI AND SINDABEZI

Livingstone, Zambia

TONGABEZI

No closure

GREEN - 1 Jan to 30 April & 1 Oct to 31 Dec

HIGH - 1 May to 30 Sept

RACK

COTTAGES	RATE TYPE Per Person	Green	High
* Accommodation, meals, activities and non- premium drinks.	Nightly - per person sharing	\$ 740	\$ 875
* Children 7-18 pay 50% if sharing with 2 adults. No children under 7.	Long Stay Discount-3 nights & more	\$ 660	\$ 830
* 40% Single Supplement Applies in Peak Season			
HOUSES		Green	High
* Accommodation, meals, activities and non- premium drinks.	Nightly - per person sharing	\$ 930	\$ 1,050
* Children 7-18 pay 50% if sharing with 2 adults. No children under 7.	Long Stay Discount-3 nights & more	\$ 840	\$ 950
* 40% Single Supplement Applies in Peak Season			
NUT & DOG HOUSE		Green	High
* Accommodation, meals, activities and non- premium drinks.	Nightly - per person sharing	\$ 1,070	\$ 1,220
* Children 7-18 pay 50% if sharing with 2 adults. No children under 7.	Long Stay Discount-3 nights & more	\$ 960	\$ 1,100
* 40% Single Supplement Applies in Peak Season			
TANGALA HOUSE	Rate Type	Green	High
* Minimum 3 nights or more.	3 Night Minimum Stay	\$ 870	\$ 870
* Accommodation, meals, activities and non- premium drinks.			
* Children 5-18 pay 50%. 0-4 Stay free.			
* Max 8/ Min 4 Adults OR 2 Adults & 3 Children			

SINDABEZI

No Closure

GREEN - 1 Jan to 30 April & 1 Oct to 31 Dec

HIGH - 1 May to 30 Sept

RACK

CHALETs	RATE TYPE Per Person	Green	High
* Accommodation, meals, activities and non- premium drinks.	Nightly - per person sharing	\$ 595	\$ 680
* Children 15 and over only. Full adult rates apply.	Long Stay Discount-3 nights & more	\$ 540	\$ 650
* 40% Single Supplement Applies in Peak Season			
HONEYMOON CHALET		Green	High
* Accommodation, meals, activities and non- premium drinks.	Nightly - per person sharing	\$ 650	\$ 770
* Children 15 and over only. Full adult rates apply.	Long Stay Discount-3 nights & more	\$ 590	\$ 730
* 40% Single Supplement Applies in Peak Season			

Notes, from us to you:

- Standard rates include accommodation, all meals, non-premium drinks, house and sparkling wine, laundry and the below range of inclusive activities. Does not include champagne, premium wines or liqueurs.
- Tangala House bookings enjoy private vehicles and boats for all activities.
- 40% single supplement applies during high season only.
- We reserve the right to ask guests to check in after 13:00hrs and check out by 11:00hrs
- All bookings and cancellations are taken per our terms and conditions.
- Dog House and Tangala House enjoy private vehicles and boats for all activities.



Our Rate Includes the following activities:

- Visit to the Tongabezi Trust School, Tujatane.
- Sunrise and sunset boat trip on the Zambezi.
- Lunch on local Island with guided walk Fishing (equipment provided).
- Visit to the Victoria Falls on the Zambian Side (Falls entrance fees are extra).
- Game drive in the Mosi-Oa-Tunya National park (Park fees are extra).
- Walk in the gorge below the Falls.
- Cultural visit to the museum (Museum entrance is US\$ 5 per person – subject to change) Local village visit.
- Mountain bike trail to local village.
- Shopping trip on the Zambian side of the Falls.
- Park fees are charged at US\$ 10 per person per visit (subject to change) and Falls Entrance Fees are US\$ 20 per person per visit (subject to change)

Our Rate Excludes:

- Champagne, premium wines and liqueurs.
- Any activities not listed.
- All transfers and flights.
- All curios, gratuities and telephone calls.

Children at Tongabezi and Sindabezi:

- **Tongabezi:** We are happy to take children seven and over. Children 18 and younger pay 50% unless they are in their own room when full rates apply or when staying in the Garden Family House¹.
- **Sindabezi:** We are happy to take children of 15 and over. Full adult rates apply. We are happy to take younger children if the island is taken privately.
- **Tangala:** No age limit. Children 18 and younger pay 50% of rates.

Transfer Rates:

Road:

Livingstone Airport or Zimbabwe/Zambia Border	2021: \$45 pp each way min 2 pax 2022: \$50 pp each way min 2 pax
Livingstone Airport – Private Vehicle (up to 10 pax)	2021: \$120 per vehicle each way 2022: \$135 per vehicle each way
Return Transfers to non-inclusive activities	2021: \$35 pp each way min 2 pax 2022: \$40 pp each way min 2 pax

(Please contact us direct for a quote for transfers to Victoria Falls and Kasane Airports).

Flights:

Lusaka to Livingstone with Pro Flight	2021: \$300 approx. pp each way
Livingstone to Ila Safari Lodge, Kafue National Park	2021: \$470 pp each way min 2 pax
Livingstone to Chisa Busanga Camp, Kafue National Park	2021: \$600 pp each way min 2 pax

[Prices for 2022 were not available on release of this rate sheet]

¹ Children in the Garden House are charged at the reduced rate of \$220 for up to 3 children 14 and younger.

² Tangala House requires a minimum of a 3-night booking.



ILA SAFARI LODGE

Central Kafue National Park, Zambia

Closes 1 Feb to 4 March 2021 inclusive and 31 Jan to 3 Mar 2022 inclusive

GREEN - 1 Jan to 30 Jun & 1 Nov to 31 Dec

HIGH - 1 July to 31 October

RACK

GENERAL	RATE TYPE per person	RACK	
		Green	High
* Accommodation, meals, activities and non- premium drinks.	Nightly - per person sharing	\$ 450	\$ 695
* Children 5-18 pay 50% if sharing with 2 adults. 0-4 Stay free.	Long Stay Discount-3 nights & more	\$ 360	\$ 560
* 40% Single Supplement Applies in Peak Season.			

Notes from us to you:

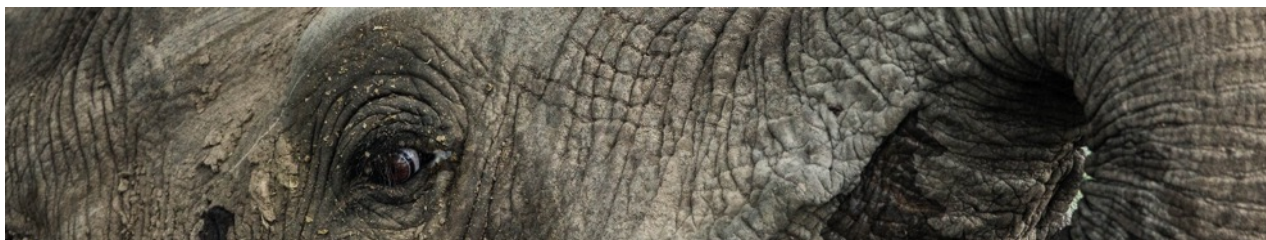
- 2 Family units with a king bed and 2 single beds. 6 Luxury tents with outdoor showers. 2 luxury tents with tubs on the deck.
- A maximum of 6 x guests per vehicle. Please enquire with Reservations regarding private vehicles.
- 40% single supplement applies in high season only.
- All bookings and cancellations are taken per our terms and conditions.

Our Rate Includes:

- Luxury tented accommodation, all meals and non-premium drinks (soft drinks, house wines, local spirits and beers), Wi-Fi and laundry, 10% service charge and 1.5% tourism levy.
- Morning and evening Game Drives - both fossil-fueled and on our electric game viewers.
- Walking Safaris. Maximum 6 people per walking safari and minimum age for children is 12.
- Fishing and Boating, fossil-fueled and on electric pontoon boat.
- Visit the Chunga community & school as well as our Agricultural Community Farming Project.
- Bush breakfasts and lunches including lunch on the E-Boat while silently drift down the Kafue!

Our Rate Excludes:

- Premium or non-listed drinks.
- Park Fees of \$20 per adult and \$10 per child (5-12yrs) per person per night stayed. Subject to change.
- All road transfers and flights except the road transfer from the local Chunga (CHG) airfield for fly in clients.
- All curios and gratuities.



Children at Ila Safari Lodge:

- Children of all ages are welcome. Children 4 years and under stay free of charge.
- Children aged 5 – 18 years pay 50% when sharing with 2 full paying adults.
- Children aged 19 years and older are charged adult rates.
- Cots are available for children aged 0 – 2 years.
- Individual extra beds for children aged 3 – 18 can be provided in the same room. Maximum 1 extra bed per tent.
- Regretfully, only children 6 years and older are allowed on game drives and 12 years and older on walking safaris.
- Should a vehicle be available, then a private vehicle can be booked for families with children younger than 6. This can be arranged at the lodge but cannot be guaranteed.
- Ila Safari Lodge is unfenced and wild animals can roam between the tents and lodge area.
- There is a communal swimming pool.

ROAD - 2022

	Rate	Travel	Carrier	Departure Restrictions
LUN-ISL	US\$ 195.00	3h 30min	Green Safaris	Earliest Departure 08h00 + Latest Departure 15h30
ISL-CBC intercamp	US\$ 125.00	5h 00min	Green Safaris	Earliest Departure at Sunrise + Latest Departure at 12h00

* Road transfers between ISL and CBC are one way only ie client will be required to fly out of CBC/Busanga Plains

* Rates are per seat per person one way with a minimum of 2 people charged.

* Baggage allowance based on flight restrictions if any.

* Lusaka transfers in luxury air conditioned mini buses. A comfortable maximum of 5 people per vehicle is carried.

* Intercamp transfers in game drive vehicles.

* These rates apply only when staying with Green Safaris Properties.

* No fixed schedule. Bookings made on demand but clients may be required to share where possible.

FLIGHTS 2021 only - Zambia

	Rate	Travel	Carrier	Departure Restrictions
LUN-CHG	US\$ 370.00	1h 00min - 1h 20min	Skytrails	Earliest Departure 08h00 + Latest Departure 16h00
LUN-BUS	US\$ 470.00	1h 15min - 1h 40min	Skytrails	Earliest Departure 08h00 + Latest Departure 16h00
CHG-BUS intercamp	US\$ 150.00	approx 0h 20min	Skytrails	Earliest Departure 08h00 + Latest Departure 16h00
LVI-CHG	US\$ 470.00	1h 30min - 2h00min	Skytrails	Earliest Departure 08h00 + Latest Departure 16h00
LVI-BUS	US\$ 600.00	1h 45min - 2h15 min	Skytrails	Earliest Departure 08h00 + Latest Departure 16h00

* Flights departing LVI available 1 June - 30 November 2021.

* Flight times are dependant on the plane.

* Rates are one way per seat with a minimum of 2 per flight.

* Baggage allowance of 12kg in soft bags.

* Final confirmation on receipt of payment.

* These rates apply only when staying with Green Safaris Properties except in the case where clients are connecting to Lower Zambezi.

* Airstrip transfers to CHG and BUS are approximately 40 min and are free of charge.

* Infants under 2 with no seat allocated fly free of charge. All other ages pay adult per seat rate.

* No fixed schedule. Bookings made on demand but clients may be required to share where possible.

* Prices Subject to Change.

Flight prices are valid until 31 December 2021. 2022 rates were not available at the time of release of this rate sheet

Chisa Busanga Camp

GREEN SAFARIS



CHISA BUSANGA CAMP

Northern Kafue National Park, Zambia

Open 1 June to 15 November

GREEN - 1 Jun to 30 Jun & 1 Nov to 30 Nov

HIGH - 1 July to 31 October

RACK

GENERAL

* Accommodation, meals, activities and non-premium drinks.

* No children 14 and younger. Older children pay adult rate.

* 40% Single Supplement Applies in Peak Season.

RATE TYPE per person

Nightly - per person sharing

Long Stay Discount-3 nights & more

Green

\$ 700

High

\$ 875

\$ 630

\$ 790

Notes from us to you:

- Exclusive Tree House accommodation comprised of 4 x tents, ideal for exclusive use or for discerning couples.
- Combines well with bookings at Tangala House and Ndomo house on a buy-out basis.
- One tent has a lift and is conveniently located near the main building for those who that don't have full mobility.
- A maximum of 6 x guests per vehicle. Please enquire with Reservations regarding private vehicles.
- 40% Single Supplement applies in high season only.
- Chisa Busanga Camp is unfenced and wild animals roam between the suites and lodge area.
- The camp has a plunge pool which doubles up as a hide with an incredible view of the water hole!
- All bookings and cancellations are taken per our terms and conditions.

Our Rate Includes:

- Inclusive of all meals and non-premium drinks (soft drinks, house wines, local spirits and beers), WiFi and Laundry, 10% service charge and 1.5% tourism levy.
- Morning and evening Game Drives on our electric "Silent Safari" game viewers¹.
- Walking Safaris.
- Electrically assisted cycling safaris.

Our Rate Excludes:

- Premium or non-listed drinks.
- Park Fees and Bed Levies of \$50 per adult and, where applicable, \$25 per child (5-12yrs) per person per night stayed – subject to change. Please note the child policy for this property.
- All road transfers and flights except the road transfer from the Busanga (BUS) airfield for fly in clients.
- All curio and gratuities.

¹ We wouldn't want to mis-lead here, given the travel distances, we have a fossil fueled vehicle that does transfers. However, game drives are all electric.

Chisa Busanga Camp

GREEN SAFARIS



Children at Chisa Busanga Camp:

- Children aged 15 years and older are welcome at Chisa Busanga Camp. Kindly note, our small size means we have to ask for the full adult rate.
- Reservations for children younger than 15 years on a buy-out basis of the camp.

FLIGHTS AND TRANSFER RATES:

Road Transfer per person one way – min 2 pax:

- Ila Safari Lodge to Chisa Busanga Camp (5 hours 00 mins)

2021:	\$110
2022:	\$125
- Road transfers are in open game drive vehicles.
- A picnic is provided approximately halfway during the transfer.
- The transfer is conducted in such a way that it is a game drive with the opportunity for great game viewing but with 130kms to cover, the distance means a faster pace will be required during the journey.

FLIGHTS 2021 only - Zambia

	Rate	Travel	Carrier	Departure Restrictions
LUN-CHG	US\$ 370.00	1h 00min - 1h 20min	Skytrails	Earliest Departure 08h00 + Latest Departure 16h00
LUN-BUS	US\$ 470.00	1h 15min - 1h 40min	Skytrails	Earliest Departure 08h00 + Latest Departure 16h00
CHG-BUS intercamp	US\$ 150.00	approx 0h 20min	Skytrails	Earliest Departure 08h00 + Latest Departure 16h00
LVI-CHG	US\$ 470.00	1h 30min - 2h00min	Skytrails	Earliest Departure 08h00 + Latest Departure 16h00
LVI-BUS	US\$ 600.00	1h 45min - 2h15 min	Skytrails	Earliest Departure 08h00 + Latest Departure 16h00

* Flights departing LVI available 1 June - 30 November 2021.

* Flight times are dependant on the plane.

* Rates are one way per seat with a minimum of 2 per flight.

* Baggage allowance of 12kg in soft bags.

* Final confirmation on receipt of payment.

* These rates apply only when staying with Green Safaris Properties except in the case where clients are connecting to Lower Zambezi.

* Airstrip transfers to CHG and BUS are approximately 40 min and are free of charge.

* Infants under 2 with no seat allocated fly free of charge. All other ages pay adult per seat rate.

* No fixed schedule. Bookings made on demand but clients may be required to share where possible.

* Prices Subject to Change.

Flight prices are valid until 31 December 2021. 2022 rates were not available at the time of release of this rate sheet

SHAWA

LUANGWA CAMP

GREEN SAFARIS



SHAWA LUANGWA CAMP

Nsefu GMA, South Luangwa National Park, Zambia

Open 1 May to 30 November

GREEN - 15 May to 30 June and 1 Nov to 30 Nov

HIGH - 1 July to 31 October

RACK

GENERAL

- * Accommodation, meals, activities and non- premium drinks.
- * Children 5-18 pay 50% if sharing with 2 adults. 0-4 Stay free.
- * 40% Single Supplement Applies in Peak Season

RATE TYPE per person

- Nightly - per person sharing
- Long Stay Discount-3 nights & more

Green

- \$ 550
- \$ 440

High

- \$ 800
- \$ 640

Notes, from us to you:

- Luxury tented accommodation comprised of 5 x tents. 2 are interconnected by a walkway and can be used individually or as a family unit. Due to their proximity we suggest only guests that know each other occupy these tents.
- A maximum of 6 x guests per vehicle. Please contact Reservations for information on private vehicles.
- 40% single supplement applies in high season only.
- All bookings and cancellations are taken per our terms and conditions.

Our Rate Includes:

- Inclusive of all meals and selected non-premium drinks (soft drinks, house wines, local spirits and beers), WiFi and Laundry, 10% service charge and 1.5% tourism levy.
- Morning and evening Game Drives on our electric "Silent Safaris" game viewers¹.
- Walking Safaris.
- Bush breakfasts & lunches.

Our Rate Excludes:

- Premium or non-listed drinks.
- Park Fees of \$25 per adult and \$12.50 per child (5-12yrs) per person per night stayed. Subject to change.
- All road transfers and flights.
- All curios and gratuities.

¹ We wouldn't want to mis-lead here, given the travel distances, we have a fossil fueled vehicle that does transfers, game drives are all electric.

SHAWA

LUANGWA CAMP

GREEN SAFARIS



Children at Shawa Luangwa Camp:

- Children of all ages are welcome. Children 4 years and younger stay free of charge.
- Children aged 5 – 18 years pay 50% when sharing with 2 full paying adults.
- Children aged 19 years and older charged at adult rates.
- Regretfully, only children 6 years and older are allowed on game drive and 12 years and older on walking safaris. Should a vehicle be available, then a private vehicle can be made available for families with children younger than 6. This can be arranged at the lodge but can't be guaranteed.
- Shawa Luangwa Camp is unfenced, and wild animals can roam between the tents and lodge area.
- There is a communal swimming pool.

TRANSFERS AND FLIGHTS:

Road Transfers:

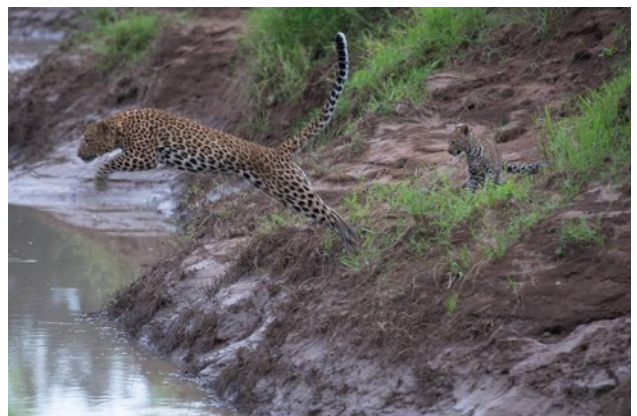
- Mfuwe Airstrip – Shawa Luangwa Camp transfer (40 min)

Complimentary

Air Transfer:

- Lusaka to Mfuwe Airstrip (1 hour) one way booked with Proflight
 - Proflight booked based on class and seat availability at time of booking.
 - Prices are subject to change without prior notice.

Approximately \$350





• GREEN SAFARIS • NATURALLY UNIQUE



KAYA MAWA

Likoma Island, Malawi

Closes 4 Jan to 1 April 2021 and 3 Jan to 1 April 2022

GREEN - 1 April to 31 July & 1 Nov to 4 Jan

HIGH - 1 Aug to 31 Oct

RACK

STD ROOMS + STD FAMILY (4 Standard + 2 Family Units) <i>* Accommodation, meals, non-premium drinks + non-motorised activities. * Children 5-18 pay 50% if sharing with 2 adults. 0-4 stay free. * 40% Single Supplement Applies in Peak Season.</i>	RATE TYPE Per Person Nightly - per person sharing Long Stay Discount-3 nights & more	RACK	
		Green	High
PREMIUM ROOMS + POOL SUITES (3 Units) <i>* Accommodation, meals, non-premium drinks + non-motorised activities. * Children 5-18 pay 50% if sharing with 2 adults. 0-4 stay free. * 40% Single Supplement Applies in Peak Season.</i>	Nightly - per person sharing Long Stay Discount-3 nights & more	\$ 325	\$ 495
		\$ 260	\$ 446
MADIMBA + MAINJA PRIVATE HOUSES (2 Units) <i>* Accommodation, meals, non-premium drinks + non-motorised activities. * Children 5-18 pay 50% if sharing with 2 adults. 0-4 stay free. * 40% Single Supplement Applies in Peak Season.</i>	Nightly - per person sharing Long Stay Discount-3 nights & more	\$ 375	\$ 550
		\$ 300	\$ 495
NDOMO HOUSE <i>* Accommodation, meals, non-premium drinks + non-motorised activities. * Children 5-18 pay 50% if sharing with 2 adults. 0-4 stay free. * Minimum 4 adults per booking. * 40% Single Supplement Applies in Peak Season.</i>	Nightly - per person sharing Long Stay Discount-3 nights & more	\$ 425	\$ 600
		\$ 340	\$ 540

Rates Include:

- Fully inclusive of all meals, non-premium drinks, laundry and limited Wi-Fi available in certain areas.
- Equipment for snorkeling, paddling, sailing, canoeing, stand up paddle boarding, walking and biking on the island.
- A tour of the community textiles workshop "Katundu".

Rates Exclude:

- All premium brand drinks.
- Scuba diving, kite surfing, spa therapies and all motorized activities.
- All flights.
- All curios, gratuities and telephone calls.

Excluded Activities Pricing for 2021 only:

- Waterski and Wakeboarding \$40
- PADI Refresher course \$110
- Bubblemaker diving experience for 8-10 year olds \$60
- Shore Dive \$45
- Boat Dive \$65
- PADI courses available. Kindly contact us for pricing.



• GREEN SAFARIS •
NATURALLY UNIQUE



Children Policy:

- Children of all ages are welcome. Children under 4 years stay free of charge.
- Children aged 5 – 18 years pay 50% when sharing with 2 full paying adults.
- Children aged 19 years and older charged at adult rates.
- Cots are available for children aged 0 – 2 years.

FLIGHTS AND TRANSFERS:

Kindly contact directly for full details.



• GREEN SAFARIS • NATURALLY UNIQUE

INCENTIVES AVAILABLE AT ALL PROPERTIES

STAY 4 PAY 3

- * Available until 31 December 2022
- * Applies to our minimum 3 night rate
- * Minimum 3 nights per property
- * No other incentives apply when booking this deal





• GREEN SAFARIS • NATURALLY UNIQUE

PAYMENT NOTES

Please note that all bank charges including intermediary bank charges are the responsibility of the client. The correct and full amount as invoiced must be received in our account.

All prices are quoted in USD.

BOOKING TERMS AND CONDITIONS

- For bookings 3 to 6 months and more: These bookings will be held for 14 days provisionally before being released.
- For bookings 60 to 90 days: These bookings will be held for 7 days provisionally before being released.
- For bookings less than 60 days: These bookings will be held for 48 hours provisionally before being released.
- Bookings must be confirmed with a 20% non-refundable deposit. Any confirmed booking is liable for this.
- The balance is due 45 days before travel.

CANCELLATION TERMS AND CONDITIONS

- 60 days or more before arrival we will charge 20% of the invoiced.
- Between 30 and 59 days we will charge 50% of the invoiced amount.
- Less than 30 days we charge 100% of invoiced amount.

However, we at Green Safaris fully understand that sometimes life happens and we are delighted to offer guests the opportunity to postpone their booking for up to 12 months from arrival date provided that this falls into the same season. New rates will apply if rebooked in the new year and a different season. Clients may postpone once only. To postpone a booking, we will ask you to increase your deposit from 20% to 50% at the time of postponing.

FOR RESERVATIONS:

Telephone: +44 (0) 203 2877937 or +260 976 366 054
Email: reservations@greensafaris.com
Skype: greensafaris

FOR SALES AND MARKETING

GREEN SAFARIS – Bronwyn Smith
Business Development Manager
bronwyn@greensafaris.com
+44 (0) 1223 911 046
+27 (0) 825 774 260

GREEN SAFARIS - Johann Van Zyl
America Sales
johann@farcountrycollection.com
+1 310 729 0488

GREEN SAFARIS – Lauren Watson
Marketing Manager
lauren@greensafaris.com
+260 968 359 212

GREEN SAFARIS – Honor Way
European Sales
honour@honourway.com
+44 7810 374 000
