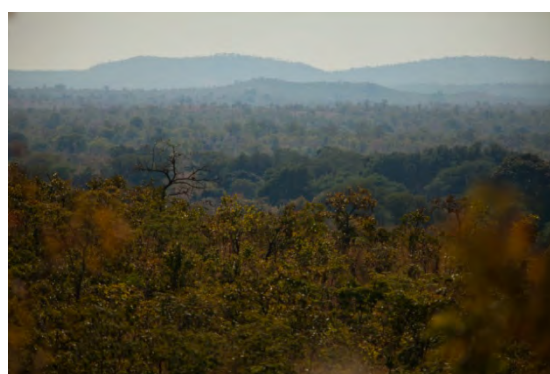
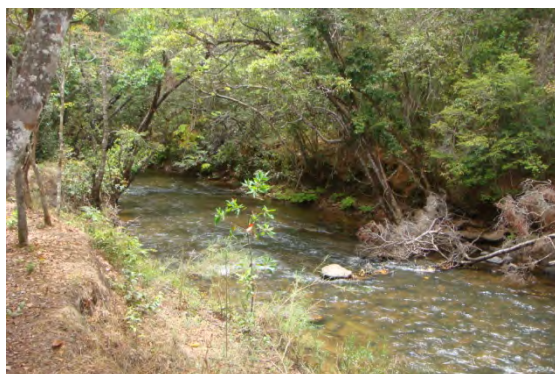


## DIRECTIONS TO OUR LUANGWA CAMPS

### MANO / CHIKOLONGO (near MANO Gate NLNP)

Camp co-ordinates: S 11°37'18" E 032°1'51"



FROM LUSAKA take the Great North Road out of town. You will go through Chisamba and Kabwe till you reach Kapiri Mposhi approx. 206km from Lusaka. Turn right at Kapiri Mposhi to Mpika. Travel approx. 440km to Mpika. Continue through Mpika and after 59.2km you will arrive at Luanya. You will see the signpost for 'North Luangwa National Park', where you must take a right turn.



To ensure you are on the right track there should be a signpost on the turnoff track with 'Mukungule 30km, North Luangwa National Park 42km'. If you zero your metre and measure the distance from this point it will be easier – it should be 45.5km from this point to Mano Gate.



After about 8km you should pass this sign for Chakulwa school. Stay on the main track.



After 31.3 you will arrive at Mukungule village - turn left at the four way junction. You should see a sign for 'North Luangwa'.



At 33.3km turn right where the road forks.



At 45.5km (cumulative km from Luanya turnoff) you will reach Mano gate, the entrance to the North Luangwa National Park. Complete the Zambia Wildlife Authority procedures and go through the gate. 4kms down the road there is a signpost: 'Chikolongo / [www.campzambia.com](http://www.campzambia.com)' on the right. Turn right here and after 1.5 km you will reach Chikolongo camp by the lovely Mwaleshi River.

FROM THE PONTOON on the East boundary of the North Luangwa National Park: cross into the Park at the pontoon crossing. Soon after the crossing you arrive at a T-junction where you must turn right. From here you will proceed towards Mano gate through pretty desolate backcountry. You will pass through the Black Rhino sanctuary and come across the Lubonga airstrip and the Park's operational HQ after about 38km. Continue through to another rhino fence about 10km after Lubonga and then start climbing the escarpment to Mano. Be prepared for a spectacular but steep climb over the escarpment. Proceed on the main road until you see the signpost: 'Chikolongo / [www.campzambia.com](http://www.campzambia.com)' on the left. From Lubonga to the Chikolongo signpost you should travel about 24km. Take the left turn and drive 1.5km to the Chikolongo site. Note that this turnoff is 4km from Mano gate, the Western entrance / exit of the North Park.

---

### **KANUNSHYA (new campsite replacing Mulondoshi)**

**Camp co-ordinates: S 12°02'20" E 032°21'13"**



FROM KALOVIA, take the driveway to the main road, turn left and follow the main track north. Very soon you will pass through Yakobe village. Within Yakobe village, you will pass a green mosque. Shortly after this you will reach T-junction. Turn left and cross the Lukusuzi river (wet until July). Cross the river and head up to Luambe National Park where there is an entrance gate (Chakolwa gate) and an exit gate (Chipuka Gate) after 30kms through the Park.

From Chipuka gate, after about 9 kms you will come to the Chitingulu Court House on the left. Take the left turn here. If you go straight, this takes you in to Chitingulu town and on past the Catholic Mission and continues on to Lundazi. The left turn takes you to Zokwe village and then a few km further, Zokwe game scout camp. Sign in, go through the barrier and approximately 30km onwards you will reach Chiweza School. Turn left and proceed for roughly 17km to Kanunshya Gate.

FROM KANUNSHYA GATE, the scout or one of our staff members will be happy come with you to help with directions to the site. If you zero your metre here the accumulative distance to the site is 6.1km. From the gate drive approx. 700m to a fork in the road, take the right track. Drive 1.6km to the Lundazi river crossing (dry from July), you will need 4 wheel drive for the crossing. The track is very light so the accompanying staff member will be needed here. After 2.8km there is another crossing of a small stream. After 6.1km you should reach the site.

FROM MANO / CHIKOLONGO campsite, take the 1.5km track to the main road and turn right. Follow the track down the escarpment into the valley. You will pass through some gates for the Black rhino sanctuary and will arrive at Lubonga airstrip and the parks operational HQ after 24km from the Chikolongo turnoff. After 38km from Lubonga there will be a turnoff track to your left (there is a sign for Luangwa North camp for the other road). Take the left track which will take you to the pontoon. There is someone to help you with the crossing. After 7.6km you will come to a T-junction, take a left turn which will take you to Luelo. It is 24km from the pontoon to Luelo. At Luelo take the track right and travel 31km south where you come to



another T-junction. Turn right. After 8km you should arrive at Kanunshya Gate (see directions from Kanunshya gate)

---

**KALOVIA (new campsite replacing Chibembe)**

**Turn-off co-ordinates: S 12°45'40" E 032°04'49"**

**Camp co-ordinates: S 12°45'50" E 032°04'31"**



FROM MFUWE AIRPORT take the main tar road into Mfuwe town. You will see a Zesco substation on the left, turn right onto the tar road (main road to Chipata). After a few kilometres take a sharp left turn (S 13°12.503' E031°56.586') at Masumba village onto a dirt track. After 2km you will cross a small bridge. 1km after the bridge there is a junction, keep on the right track. After 20km for the turnoff you should reach Miliyoti gate.

FROM MFUWE BRIDGE take the main tar road to Mfuwe airport. When you reach the Zesco substation on the right, turn left onto the tar road (main road to Chipata). After a few kilometres take a sharp left turn (S 13°12.503' E031°56.586') at Masumba village onto a dirt track. After 2km you will cross a small bridge. 1km after the bridge there is a junction, keep on the right track. After 20km for the turnoff you should reach Miliyoti gate.

FROM CHIPATA take the road to Mfuwe. You should travel 105km from Chipata to the turn off (S 13°12.503' E031°56.586') in Masumba village. After 2km you will cross a small bridge. 1km after the bridge there is a junction, keep on the right track. After 20km for the turnoff you should reach Miliyoti gate.

FROM MILYOTI gate, follow the main track North through the Nsefu sector to Chikwinda gate. From Miliyoti gate to Chikwinda gate you should cover 23km. These are large open plains and you should eventually cross the saltpan stream (Chichele stream). Be careful to follow the main track as there are many small game viewing tracks off the road here. It can get confusing as there is a number of unsigned roads, but just keep heading north. Follow the road to Chikwinda gate. Kalovia is approximately 20km after Chikwinda gate and you will pass through a large village called Mukasanga on the way. Follow the road through Mukasanga to the Lukuzi River crossing. Please note the road meets the dry riverbed of the Lukuzi River but at this point there is a track to the right – take this track. After driving alongside the riverbed you will arrive at the crossing point. You will need 4x4 for the crossing. After the crossing you will drive through a small village called Simone. Note that immediately crossing the riverbed there is a track off to the right which goes to Chasera but you must keep left on the main track. The Kalovia turnoff is on the left about 7km after Simone village. On the way you will pass the left turnoff to Chibembe – the Kalovia turnoff is 4.5km from the Chibembe turn-off. At the Kalovia turnoff on the left you should see the 'www.campzambia' sign and will arrive at the site after 1.2km drive from the main road.

## FROM AUGUST – OCTOBER

FROM MFUWE BRIDGE take the main tar road to Mfuwe airport. Shortly after you pass Yosefe school on your right, there will be a turn off on the left. There is an inconspicuous green sign by the turnoff for Chibembe and Tafika Camp. Take the left turnoff (S13°08.217' E031°50.960') and follow the dirt track through scattered villages. You will cross 2 dry sand riverbeds, one of which is the Msandile River. Stay on the main track till you reach Milyoti gate (see directions from Milyoti gate).

---