



The Republic Of Zambia

**Ministry of Tourism, Environment
and Natural Resources**



**Investment
Opportunities
in
Zambia's
Tourism
Sector**

Kafue National Park



THE REPUBLIC OF ZAMBIA

**MINISTRY OF TOURISM, ENVIRONMENT
AND NATURAL RESOURCES**



**KAFUE NATIONAL PARK
TOURISM INVESTMENT AND DEVELOPMENT INITIATIVE**

Table of Contents

Introduction	1
Key Facts and Figures about Zambia	2
The Tourism Sector	2
Government's Vision for Kafue National Park	4
Government's Commitments to KNP	4
Kafue National Park	5
Maps	8
Description of Advertised Sites	10
General Investment in Zambia Tourism	12
Airline Network	13
Administrative Arrangements	14
Tourism Legislation	16
Contact Details	17 & Back Cover





The country's tourism industry is relatively small in comparison to the tremendous tourist resource base. This resource base includes the following:

- The beautiful and pristine environment, and an almost perfect climate, envied by many;
- Large concentrations of wild animals and birds in 19 National Parks and 34 Game Management Areas;
- The magnificent Victoria Falls, which is one of the Seven Natural Wonders of the World, as well as a World Heritage Site;
- Natural phenomena such as the many falls, lakes, rivers, mountains, and overall scenic beauty;
- Rich traditional and Cultural Ceremonies which take place in all the nine provinces of the country; and



Kuomboka Ceremony

- Peaceful, warm, and welcoming people of Zambia.

The priority aims of Government for tourism development, among other things, include the following:

- To bring about growth in the tourism industry through the encouragement of the private sector;
- To ensure that such equitable growth is environmentally sustainable and will be accessible to future generations;
- To diversify the tourism product from being mainly wildlife based;
- To carry out necessary legislative and organizational changes to facilitate development in the sector;
- To raise public awareness of the national significance of investment in and promotion of tourism;



Sunset, Lunga River

- To promote leisure and recreation tourism;
- To promote initiatives for regional tourism co-operation;
- To promote proper investment incentives in Zambian wildlife, cultural tourism, and in the tourism product;
- To improve tourist infrastructure roads, railways, airports, tele-communications, and other supporting facilities;
- To seek to help the industry to create more local jobs, to generate more local incomes, to earn more foreign exchange, and to contribute more to Government



Walking Safari, KNP



Priority aims of Government (cont'd)

revenues as a result of the improved business climate and the improved viability;

- To facilitate the availability of local supplies to the tourism industry;
- To improve the national tourism administration so that it helps the tourism industry to be competitive and viable.

GOVERNMENT'S VISION FOR KAFUE NATIONAL PARK

The Government's vision for KNP is to make the park an attractive and popular tourist destination, both to the local and international visitor, and to ensure that the park contributes to the country's economy through direct income generation and job creation. To this effect the Government endorses investment in tourist accommodation facilities in the park, and is committed to rehabilitation of the general tourism park infrastructure.

GOVERNMENT'S COMMITMENTS TO KNP

Government has committed itself to provide basic infrastructure in the KNP to facilitate core tourist business in the area. In particular, the following is underway:

- Rehabilitation of the Lusaka-Mongu Road which passes across the park.



Herd of Buffalo, Busanga Plains

- Upgrading the road from the Mongu-Lusaka turn-off through Itezhi-Tezhi, Ngoma, and Dundumwezi to Kalomo;
- Upgrade the Ngoma-Chunga Road through Lufupa Moshi up to Kabanga Gate and through to Kasempa;
- Repairing and maintaining all park's access, management, and game viewing roads;
- Opening up new roads as recommended in the Management Plan;
- Upgrade the airstrips which are located inside the park, such as Ngoma, Chunga and Moshi.



Boating Activities



Sable Antelope

KAFUE NATIONAL PARK

Location and Size

The park is located between latitude 14° 03 and 16° 43 South and longitude 25° 13 and 26° 46 East in the south-central part of Zambia. It stretches some 306 km in a north-south direction and 143 km in an east-west direction, covering an area of approximately 22,480km². This area covers about 33% of the country's national park estate. It was declared a national park in 1950 and is one of the five largest national parks in the world. The park is surrounded by nine Game Management Areas, namely: Mumbwa, Namwala, Nkala, Bilibi, Sichifulo, Mulobezi, Mufunta, Kasonso Busanga, and Lunga Luswishi.

Park access

KNP is accessible by road and by air. Road access from east and west is by the tarred Lusaka-Mongu public road that passes through the park. The road links the park with Mumbwa town and Lusaka in the east and Kaoma and Mongu in the west. In the north, the park is accessed by a gravel road from Kasempa town to Kabanga. The Kasempa-Mumbwa public gravel road passes through the park in the north-eastern part of the park. Both the Kasempa-Mumbwa and Kasempa-Kabanga roads facilitate linkage with Solwezi and the Copperbelt. In the south, the park is accessed by a road from a junction with Lusaka-Mongu public road through Itzhi-Tezhi town to Musa Gate. Visitors from Livingstone access the park in the south by a gravel road from Kalomo to Dundumweze Gate.

Access by air is facilitated by the presence of four airstrips in the park (at Ngoma, Chunga, Moshi, and Hippo Lodge) and three airstrips on the periphery of the park (at Puku Pan Lodge, Lushimba Wildlife Camp, and Lunga Cabins).

There is a network of gravel roads within the park which are used for management and game viewing purposes. Accessibility within the park is hampered in the wet season when most of the roads become impassable.

Natural Resource Endowment

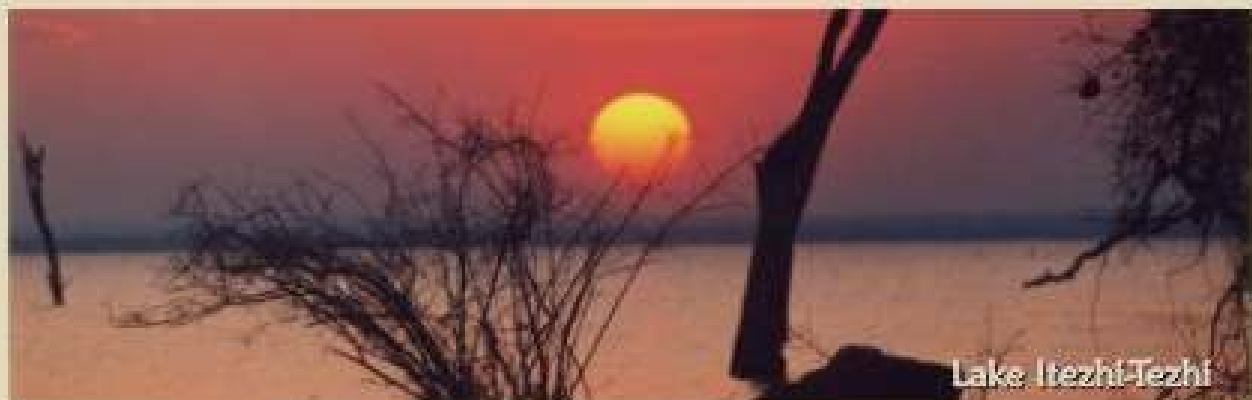
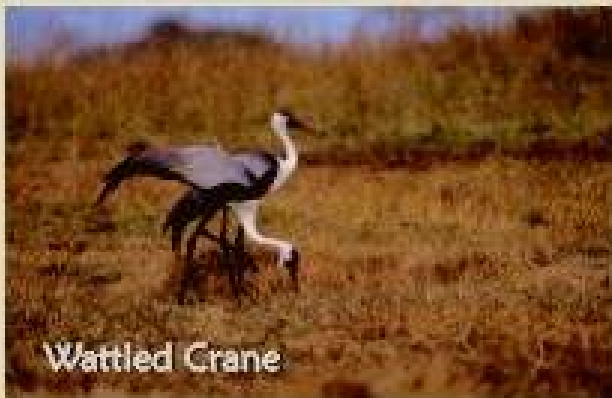
Flora

The park is endowed with a diversity of major vegetation types comprising closed forest, open forest with grass (woodland), termite mound vegetation, and Grassland. The closed Forest is classified into Baikiaea, Secondary Baikiaea, Pteleopsis, and Riparian Forests, while the Open Forest with grass is classified into Miombo, Mopane, Kalahari, and Munga Woodlands. The Termite mound vegetation is classified into Mopane, Munga and Riparian termitaria. The Grassland is classified into Dambo, Riverine, and Flood Plain Grasslands.

Fauna

KNP has an exceptionally large variety of fauna species distributed throughout in varying densities and in complex and diverse associations. Recorded to date are about 158 species of mammals, 481 species of birds, 69 species of reptiles, 35 species of amphibians, and 58 species of fish that are known to occur in the park.







Fauna (con't)

Elephant, buffalo, hippo, red lechwe, impala, puku, warthog, and other animal species occur in large numbers in the park. The threatened Wattled Crane is a park resident. Lion, cheetah, and leopard are commonly found on the Nanzila and Busanga Plains, two areas that are so distinct and popular for their high species diversity.

Potential for Tourism Development

While Kafue National Park's tourism potential has not been capitalised on, the potential is great. Its size and remoteness guarantee an exciting wilderness experience, while its proximity to the mighty Victoria Falls, makes it as an appealing destination to vary the visitor's experiences in Zambia.

Special Features of Interest

Kafue National Park has several features of interest; however some of those considered special include the following:

- Busanga and Nanzila Plains in the north and south, respectively, which support populations of lion, leopard, and cheetah;
- Large herds of elephant and buffalo;
- The Kafue River and its tributaries, which offer a number of sporting activities;
- Lake Itzhi-Tezhi, which covers an area of about 370km², is capable of offering several controlled sporting activities. The three big islands on this lake are also possible areas for day visits and other recreational activities.

Current Tourist activities

KNP provides a variety of tourist's activities of which the major ones include the following:

- Game drives
- Game viewing by boat
- Walking and Birding safaris
- River canoeing (*Kafue and Lunga Rivers including other big streams*)
- Angling (*Lake Itzhi-Tezhi, Kafue, and Lunga Rivers, including tributaries*)
- Boat cruise (*Lake Itzhi-Tezhi, and the Kafue, and Lunga Rivers*)
- Boating (*Lake Itzhi-Tezhi, Kafue River*

and Lunga River)

- Hill and rock climbing
- Great photo opportunities
- Trips to hot springs

Other possible tourist activities that can be introduced include whitewater rafting in rapid areas on the Kafue River.

Current Status of Infrastructure

The Park infrastructure includes tourist accommodation facilities such as lodges/camps, bush camps, fly camps, and camping sites. Others include: electricity supply system in the southern part of the park, management/tourist roads, and four airstrips located inside the park. There is also a conservation school camp located in the northern part, named Treetops camp, as well as a Visitors' Centre at Ngoma. At the two park headquarters (Ngoma for the southern part and Chunga for the northern part), the facilities include offices, staff houses, primary/basic schools, clinics, workshops, and bore holes. Telecommunication facilities (telephones) are available at Itzhi-Tezhi and Mumbwa towns.

Current Tourist Accommodation

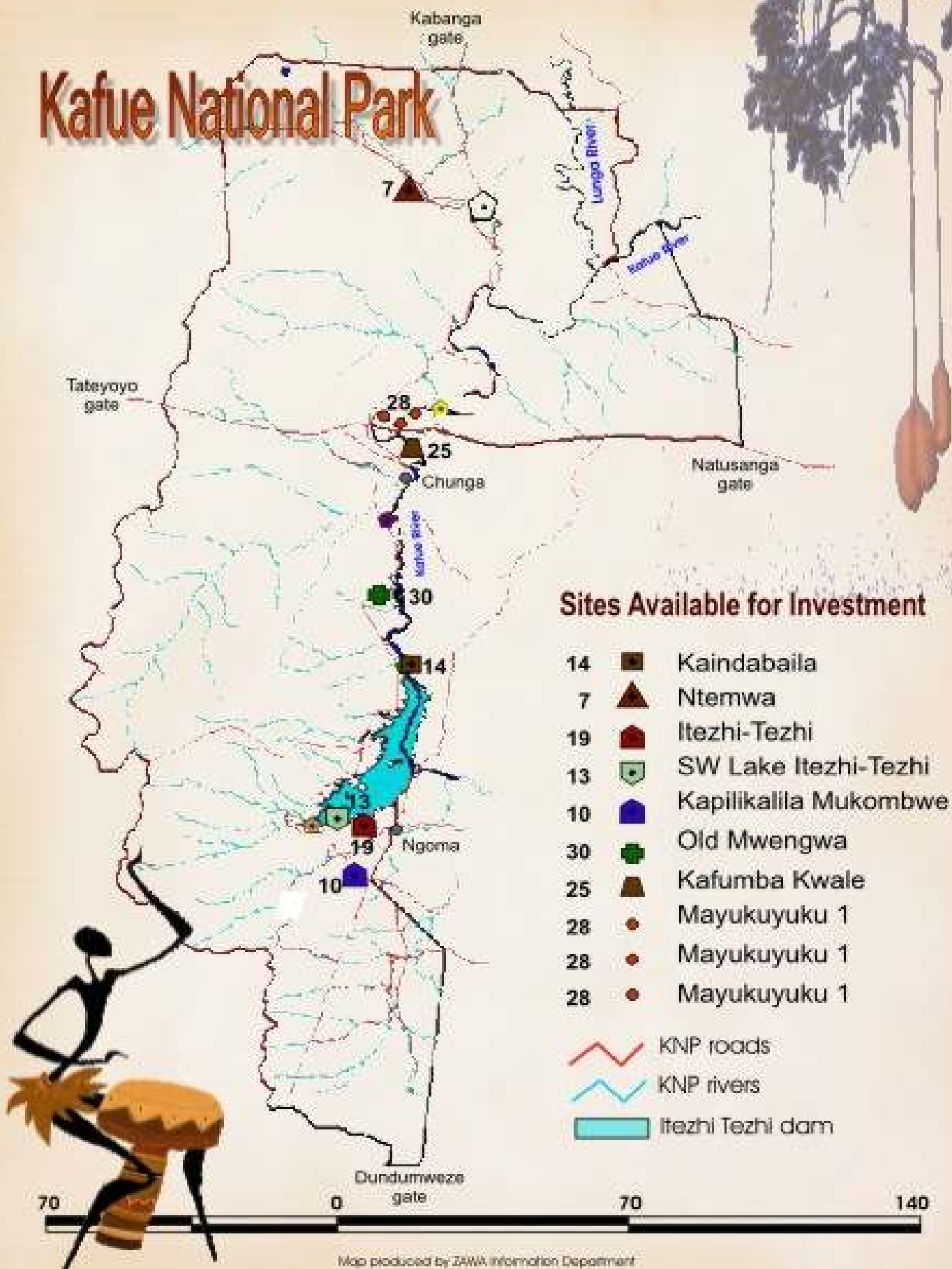
The current bed capacity in the park is considered inadequate. There are only 104 beds offered by lodges/camps inside the park and 194 beds by the lodges/camps on the periphery of the park. An additional 188 beds shall be added by the lodges/camps currently under construction inside the park.

Tourist Sites Available for Investment

For the purpose of developing the park in terms of visitor accommodation, a number of sites for the construction of new lodges and camps have been identified in the park. (*Site descriptions are on page 10, and bed capacities for each are in Table 1 on page 11.*) Once the sites have been fully developed and intensively marketed, the tourist numbers to the park are expected to increase to about 83,000 in the next five years. Interested investors are therefore invited to apply for any of these sites. The sites shall be allocated on a long term lease between the period of 15 to 25 years, renewable.



Kafue National Park



Sites Available for Investment

- 14 Kaindabaila
 - 7 Ntemwa
 - 19 Itezhi-Tezhi
 - 13 SW Lake Itezhi-Tezhi
 - 10 Kapilikalila Mukombwe
 - 30 Old Mwengwa
 - 25 Kafumba Kwale
 - 28 Mayukuyuku 1
 - 28 Mayukuyuku 1
 - 28 Mayukuyuku 1
- KNP roads
 KNP rivers
 Itezhi Tezhi dam

Map produced by ZAWA information Department

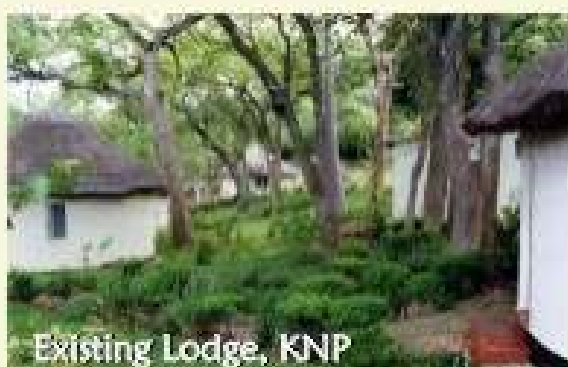
DESCRIPTIONS OF THE AVAILABLE SITES



It is the closest site to the Busanga Plains, which provides spectacular scenery and is famous for its diversity of animal and bird species. At Ntemwa, there is permanent large concentration of hippos, which makes it unique and different from other sites in the Park. There are also other Plains animals around, with lions and leopards a common sight.

Site No. 10 Kapilikalila Mukombwe

The site is located in the southern part of Kafue National Park, about 15 km from Ngoma airstrip and 10km from Lake Itzhi Tezhi.



This area's spectacular features include the hill called Kapilikalila Mukombwe, which visitors can use for climbing and hiking, and the nearby grassland patch, which is usually rich with diversity of Plains game. Near the site is Nkala Stream along which many species of animals concentrate, making the area very good for game viewing.

Access to the site is through Ngoma airstrip.

Site No. 13: Southwest of Lake Itzhi-Tezhi. (#1)

Site No. 19 Flagship Lodge

The site is located on the shoreline of Lake Itzhi Tezhi, between sites No. 12 and 13. It is characterised by rock outcrops, which are suitable for the construction of a lodge.

The site is located 20km from Ngoma airstrip. The common animal species found in the area include elephant, hippo, waterbucks, kudu, lion and several other Plains game.

Site No. 7 Ntemwa

The site is located on the banks of Lufupa River, about 20km from Moshi airstrip in the northern part of Kafue National Park.

The Site is located on the banks of Lake Itzhi-Tezhi. The diversity of animal species within this area is very good. The presence of the lake adds beauty to the general attractions around this site. Common species include elephant, hippo, waterbuck, kudu, wildebeest, buffalo, zebra, and other species.

Site No. 14: Kaindabaila

The site is located in the central part of the park, at the southern end of the Mweengwa rapids on the Kafue River. The Mweengwa rapids, which stretch about 10km up the river, are a unique attraction and suitable for white water rafting. Boat cruise can also be conducted on the downstream where there are no rapids. The animal spe-



cies commonly seen within the surroundings of this area include warthog, sable antelope, buffalo, impala, waterbuck, elephant, and other species. Access is through Chunga Ngoma Road.

CAMPING SITES

Site No. 25 Kafumba Kwale

The site is located on the banks of Kafue River, about 5km away from Chunga Camp and Chunga airstrip. Mature trees provide shade all year round. The site used to be a village before declaration of the area as Game Park in 1952. The main tourist activity in this area is game viewing and fishing.

Site No. 28 Mayukuyuku 1

The site is located on the banks of the Kafue River and about 5km from the Lusaka - Mongu Road.

The Mayukuyuku rapids on the Kafue River as well as the rock outcrops provide spectacular scenery. Excellent game viewing and fishing characterise this site.

Site No. 28 Mayukuyuku 2

The site is located on the banks of the Kafue River, about 1 km away from Mayukuyuku 1

Camp site. The nearest airstrip at Chunga is 30 km away.

The rapids on the river are not seen from the site but the rock outcrops make the site fairly attractive. Game viewing and fishing are the major tourist attractions at the site.

Site No. 28 Mayukuyuku 3

The site is located on the banks of the Kafue River, about 5 north of Mayukuyuku rapids.

It is a plain ground with one big tree providing shade. The quietness of the place provides a high probability of lions visiting the camp. The other common animals include Puku, Impala, Waterbuck and Hippo.

Site No. 30 Old Mwendwa

The site is located in the Central part of Kafue national Park, near the banks of the Kafue River.

The Mwendwa rapids provides a beautiful scenery. The common animals include Elephants, Hippos, Lion, Buffalo and other plains game.

The nearest access is via the airstrip at Puku Pan Lodge on the other side of the Kafue River and then by boat to the site.



Table: 2

SITES AVAILABLE FOR INVESTMENT IN KNP

Name of Site	Site No.	Proposed Bed Capacity	Type of Facility
Ntemwa	7	24	Lodge
S. West Lake Itzhi Tezhi	13	40	Lodge
Kaindabaila	14	32	Lodge
Itzhi Tezhi Flagship	19	250	Lodge
Kapikalila Mukombwe	10	24	Lodge
Mayukuyuku 1	28	20	Camp Site
Mayukuyuku 2	28	12	Camp Site
Mayukuyuku 3	28	12	Camp Site
Total		414	

GENERAL INVESTMENT OPPORTUNITIES IN ZAMBIA TOURISM



As Zambia is relatively new on the World Tourism scene it has wide scope for investment opportunities. Tourism sub sectors where investments are required include:

- Accommodation, large and top class hotels, medium and small hotels
- Restaurants
- Tourism transport (air charters, car hire, and travel agency)
- Local parks, botanical gardens, theme parks & zoological parks
- Adventure activities
- Tour operations

- Meetings, incentives, conferences, and events (MICE)
- Tourism entertainment (night clubs)
- Wildlife tourism
- Museums
- Cultural Heritage
- Sports tourism
- Tourist arts & crafts
- Cultural/Ethno tourism and special interest groups

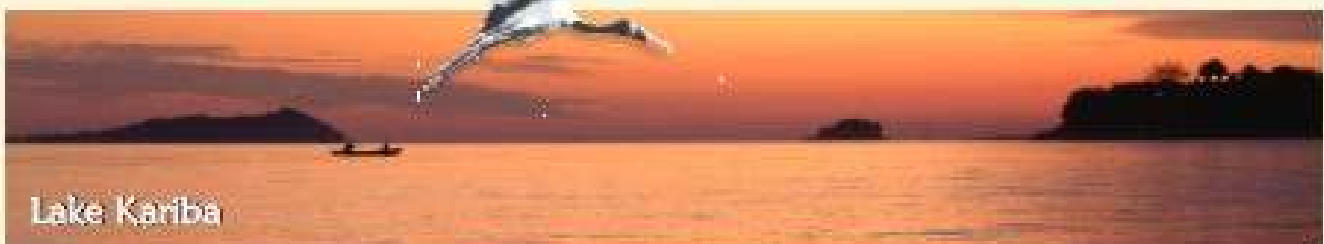
Priority Tourism Investment Zones

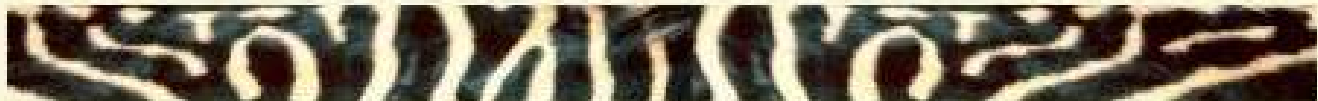
These in order of priority include:

- Livingstone and surrounding areas
- Kafue National Park and surrounding Game Management Areas
- Lower Zambezi (Siavonga Luangwa District)
- Lusaka and surrounding areas (For Conference Tourism and Sports Tourism)
- South and North Luangwa National Parks and surrounding Game Management Areas

Other Tourism Investment Opportunity Areas

- Nsumbu National Park and surrounding Game Management Areas
- Areas around the lakes in the Northern and Luapula Provinces of Zambia
- Source of the Zambezi River
- Copperbelt Province
- Kabwe, the place where the Broken Hill Man was discovered
- Promotion of Ethno/Cultural tourism such as numerous Traditional Ceremonies most of the year round including Ncwala, Kuomboka, Likumbe ya- Mize, Kusefya pa Ngwenya, etc.





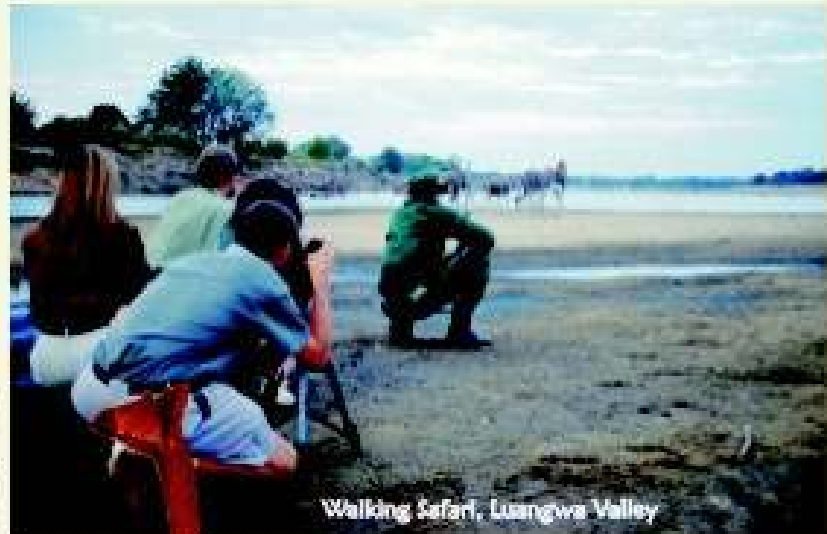
AIR NETWORK

The following airlines fly to Zambia:

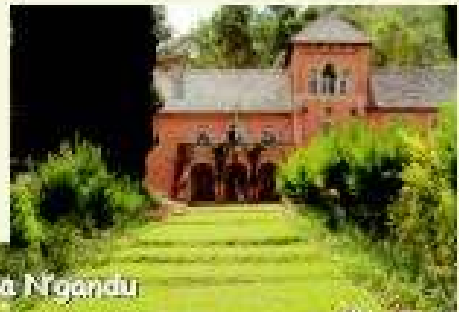
- British Airways
- Kenya Airways
- Air Zimbabwe
- Air Malawi
- Nation Wide
- South African Airways
- InterAir

At a regional level Zambian Airways flies to Harare and Lubumbashi. The country is, therefore, well serviced by international and regional airlines.

The local network is serviced by Zambian Airways that operate scheduled flights into Livingstone, Ndola, and Mfuwe. Further, air charters supplement the local scheduled flights and also operate countrywide where service is required.



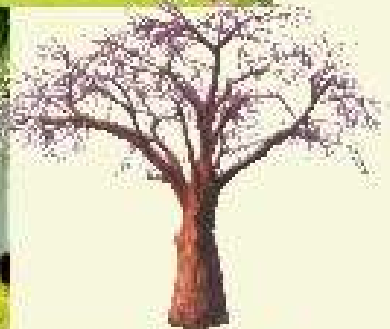
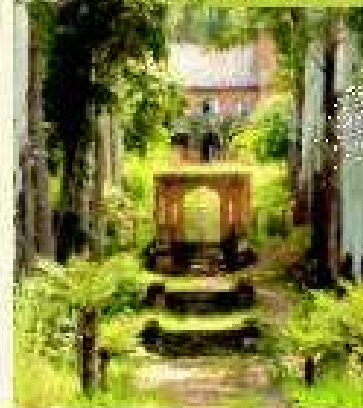
Walking Safari, Luangwa Valley



Shilwa Ngandu



Accommodations, Luangwa Valley



Chuse Falls



Zebras in the Kafue Flats



ADMINISTRATIVE ARRANGEMENTS

Procedures, Requirements and Guidelines for Investing in Zambia

Foreign investors are required to incorporate a company with the Registrar of Companies. To do this one must fill in the relevant forms and provide the necessary personal details and documents required by the registrar of companies and comply with the Companies Act before a certificate can be issued.

Investors seeking to obtain an Investment Certificate to set up a new business or expand, rehabilitate and modernise an existing enterprise in Zambia are required to complete a standard form and submit it to the Zambia Investment Centre. The Investment Centre is poised to assist interested parties with the various procedures and requirements. The Application form should be accompanied by the following:

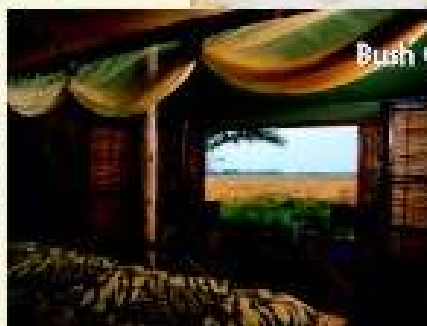
- Company incorporation documents
- Business Plan/Feasibility Study of proposed venture
- Proof of finance to cover project cost (Bank statement, Bank loan, capital equipment, suppliers credit, etc.)

Secondary Tourism Licenses

The following secondary licenses are required in addition to the Investment Certificate



Bush Camp, KNP



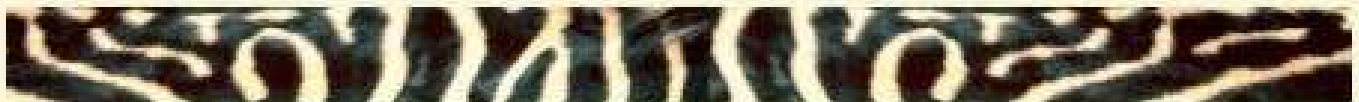
Zambia Wildlife Authority Permit (ZAWA)

The Ministry of Tourism, Environment and natural resources through ZAWA give permits to Investment projects that have to be located in National Parks or Game Management Areas. Applications should be supported by the following

- Business plan
- Proof of finance to cover project cost (Bank statement, Bank loan, capital equipment, suppliers credit etc.)
- Information on promoters' business experience
- Certificate of incorporation
- List of Shareholders/Partners



A KNP Lodge's Fleet of Vehicles



Hippo, Lufupa River, KNP

Tourism Enterprise Authorisation

The Ministry of Tourism, Environment and Natural Resources, through the Zambia National Tourist Board (ZNTB), is responsible for the issuance of the above. The authorisation may be issued upon submission of the following:

- Five year business plan
- Proof of Finance
- Certificate of incorporation
- Environmental Impact Assessment or Project Brief (for small companies)
- Written permission from ZAWA (for projects in the National Parks and GMAs)
- Investment Certificate

The process for the issuance of the Tourist Enterprise Authorisation takes a minimum of 6 weeks and a maximum of 3 months when all application guidelines have been fulfilled. This period includes the Gazette period of 30 days in the Government Gazette. This means that other necessary authorisations, permits and licenses should be obtained before lodging an application with ZNTB. The Tourism authorisation and a licence is the final authority. If the tourist enterprise is to be sited or based in a national park or a game Management area (ie an area surrounding a national park as a buffer zone), a permit from ZAWA will be required. The Tourism Enterprise Licence allows the tourism investor to set up the tourism enterprise, normally a period of 12 months to 24 months needed is given for the execution of the project of non-accommodation and accommodation, respectively.

Tourist Enterprise Licenses

This is applicable to authorised tourist enterprises that have been fully set up other than accommodation facilities (eg Bungi jumping, air Charters, tour operations ,travel agency, etc.). This is obtained from ZNTB. The license is valid for one operational year normally from April to March.

Hotel and Manager's License

The Ministry of Tourism, Environment and Natural Resources, through the Standards Inspection and Licensing Section of the



Impala





Department of Tourism Development, shall issue Hotel and Manager's licenses to authorised and fully set up enterprises in the accommodation sub-sector upon submission of the following documents:

- Tourist Enterprise Authorisation

- Health permit and fire safety certificate
- Liquor licence from the local council

The furniture and equipment must be in place and the premises must pass final inspection from the Standards, Inspection and Licensing Section.

Casino License

The Ministry of Tourism, Environment and Natural Resources through the Standards, Inspection and Licensing Section may issue the Casino License to the applicant upon submission of the following documents:

- Certificate of Company Registration or Incorporation
- Show evidence of Business ownership or Lease agreement
- Application submission to Minister

Tourism Legislation

The following legislation exists in the tourism sector:

- **Tourism Act 1979** This act deals with the regulation, licensing and inspection of all tourism enterprises and establishments in the country (except for Tourism accommodation (Hotels)) at the moment. This is the main legislation covering tourism enterprise operations (except for Tourism accommodation).
- **Hotels Act, Cap. 153** - This act deals with the regulation and inspection of all tourism accommodation establishments in the country.
- **Zambia Wildlife Act 1998** - This act establishes the Zambia Wildlife Authority as a statutory body that manages the country's wildlife

biodiversity particularly in the 19 National Parks and 36 Game Management Areas.

- **National Heritage Conservation Commission Act.** This act establishes the National Heritage Conservation Commission a statutory body that oversees the country's natural and cultural heritage.
- **Museums Act, Cap. 267 of 1966** - This act deals with the establishment and operations of Public Museums in the country.
- **Casinos Act, Cap. 157** - This act deals with the operations of Casinos and similar betting operations in the tourism sector.

The sector is in the process of consolidating the Hotels Act, Tourism Act, and the Casinos Act into one in order to harmonize tourism legislation in the country and create a one-stop centre for tourism enterprise investment and operations through the *Tourism and Hospitality Bill*, which is in an advanced stage of preparation.

Other relevant acts are the Environmental

Pollution Protection and Control Act, (EPPCA), which is implemented by the Environmental Council of Zambia. Other operational Acts such as the Maritime and Inland Water Way Act for water vessels, Civil Aviation Act for Air Charters, etc. are important in the implementation of projects in Zambia and are communicated at the application stage depending on the nature of the enterprise.

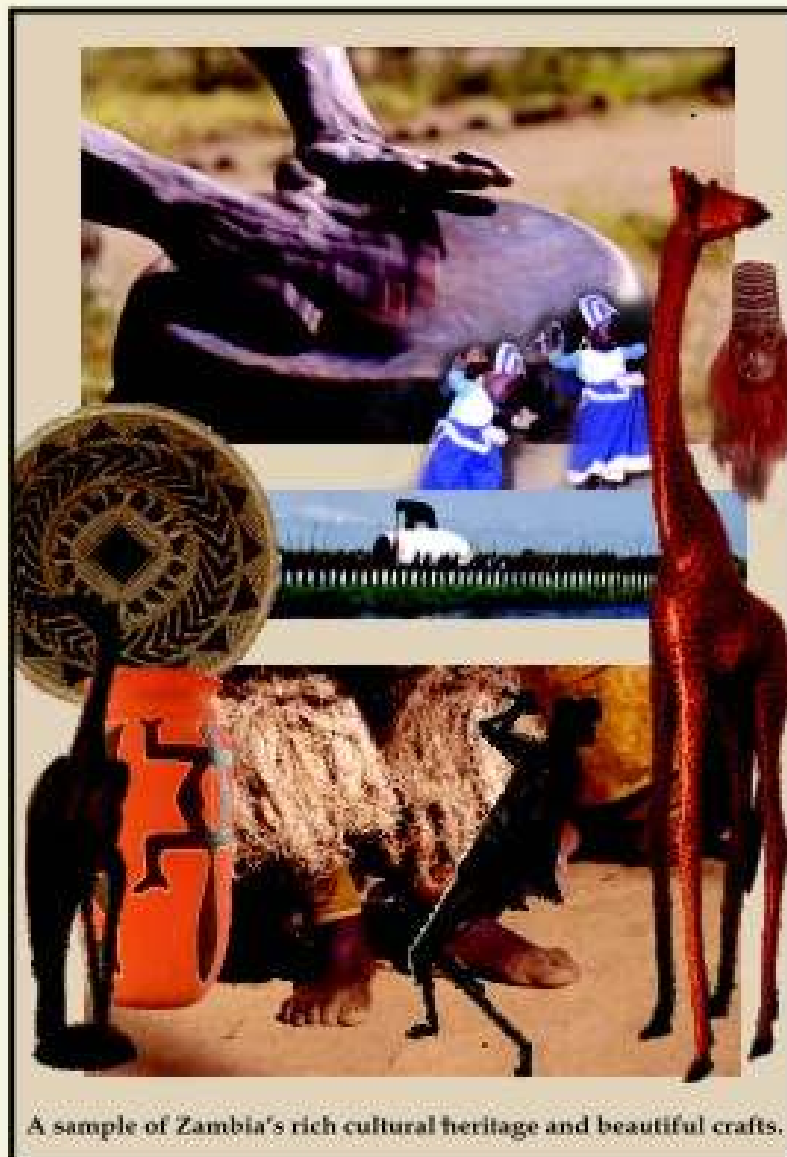


Contacts Details:

The Permanent Secretary
Ministry of Tourism,
Environment and
Natural Resources
Kwacha House
Cairo Road
P.O. Box 30575, Lusaka
Tel: (+260-1) 229416
Fax: (+260-1) 229420
E-mail:
mintour@zamnet.zm

Recognition and thanks to individuals from the following organisations for their help in preparation of this brochure:

- Ministry of Tourism, Environment and Natural Resources
- Zambia Wildlife Authority
- Zambia Investment Centre
- Zambia National Tourist Board
- Zambia Privatisation Agency



A sample of Zambia's rich cultural heritage and beautiful crafts.



For more information on Zambia Tourism and its exciting destinations, log on to:
www.zambiatourism.com

Photography credits and thanks to:
Lodge Operators
Ed Smythe
Hapenga Kabeta
Francois d'Elbee
Lackson Mwenya
Marek Patzer
Pamela Wyeth

Brochure & CD produced by
Africa InSites
info@afrika-insites.com



The Republic Of Zambia

**Ministry of Tourism, Environment
and Natural Resources**

Investment Opportunities in Zambia Tourism



Kafue National Park

For Tourism Investment opportunities in
Kafue National Park, interested parties are encouraged to
submit their applications to:

The Permanent Secretary
MINISTRY OF TOURISM, ENVIRONMENT AND NATURAL RESOURCES
Kwacha House, Cairo Road
P.O. Box 30575, Lusaka
Tel: (+260-1) 229416
Fax: (+260-1) 229420 or (+260-1) 222189
E-mail: mintour@zamnet.zm